

# INDEL KARIYATH HEIGHTS



## About Us

**INDEL INFRA Pvt.Ltd.** is an integrated infrastructure development company since 2012 which is unique in catering to the entire spectrum of real estate from commercial, industrial to residential. Our primary focus is of developing high quality constructions and attain leadership positioning in the real-estate field and to become one of the most preferred brands in Kerala. We belong to a well-established business group, INDEL Corporation Pvt. Ltd., a diversified establishment since mid 80'.

We promise our customers with personnel commitment to each client to bring in truly global living standards right into your home or office. **INDEL-KARIYATH HEIGHTS** is a commercial cum residential project at Vanchiyoor, Trivandrum by blending the traditional essence and modern amenities.

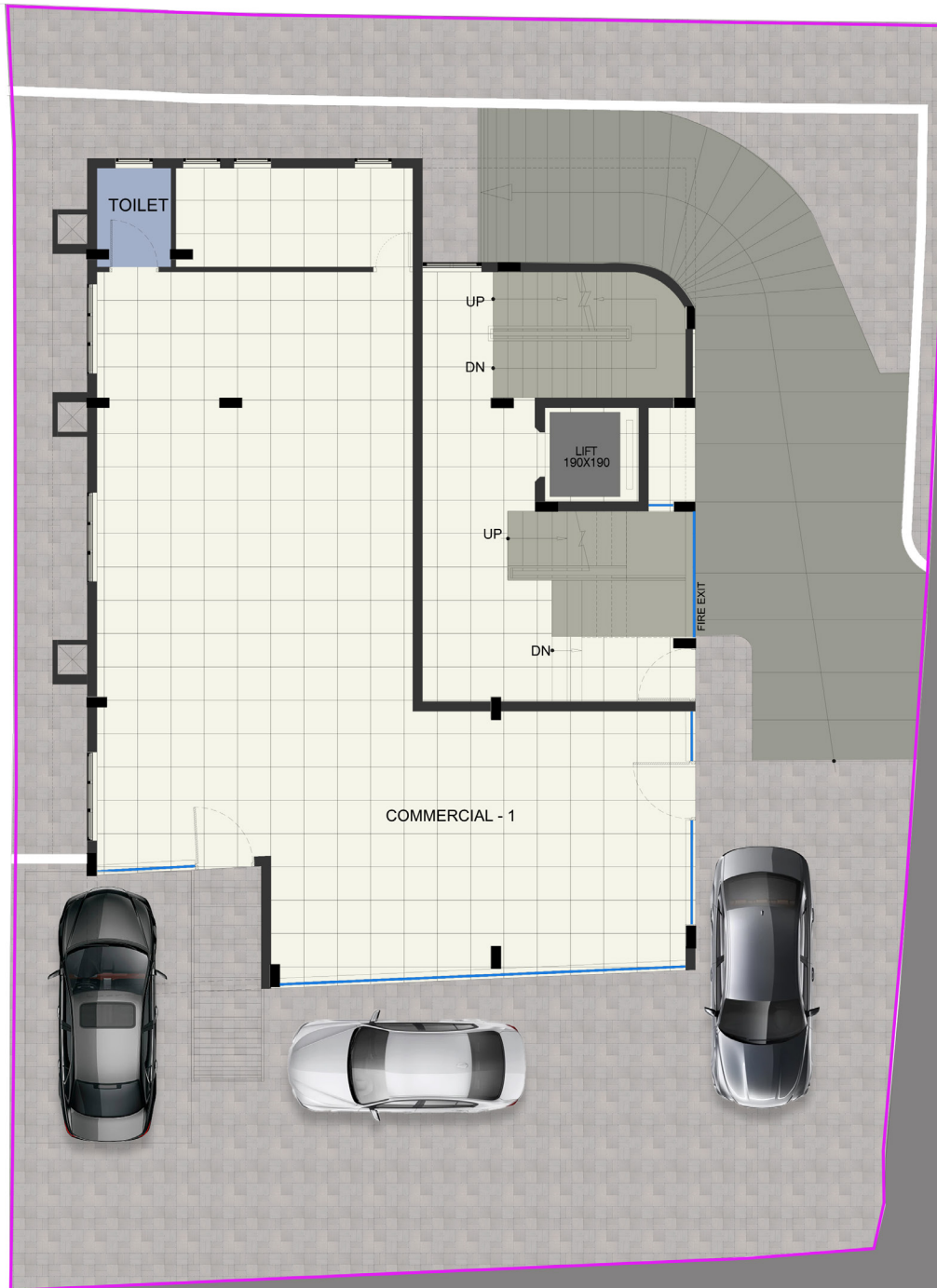








# Ground Floor



TO VANCHIYOOR JN

TO AMBALATHUMUKKU JN

TO UPPIDAMOODU

# First Floor



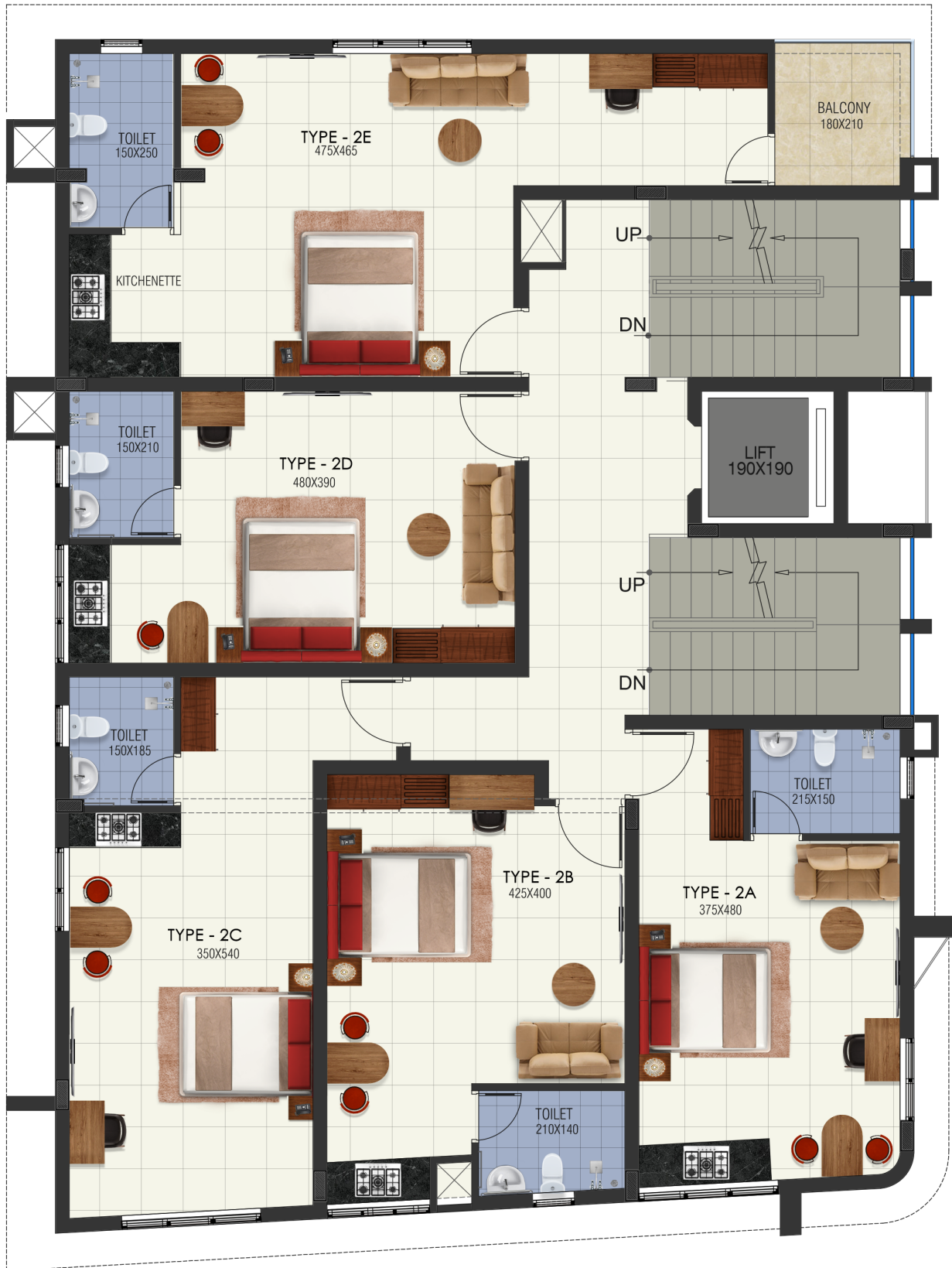
**TYPE - A**  
**BUILTUP AREA**  
**318 sq.ft**

**TYPE - B**  
**BUILTUP AREA**  
**390 sq.ft**

**TYPE - C**  
**BUILTUP AREA**  
**486 sq.ft**



# Second Floor



**TYPE - A**

**BUILTUP AREA**  
390 sq.ft

**TYPE - B**

**BUILTUP AREA**  
394 sq.ft

**TYPE - C**

**BUILTUP AREA**  
450 sq.ft

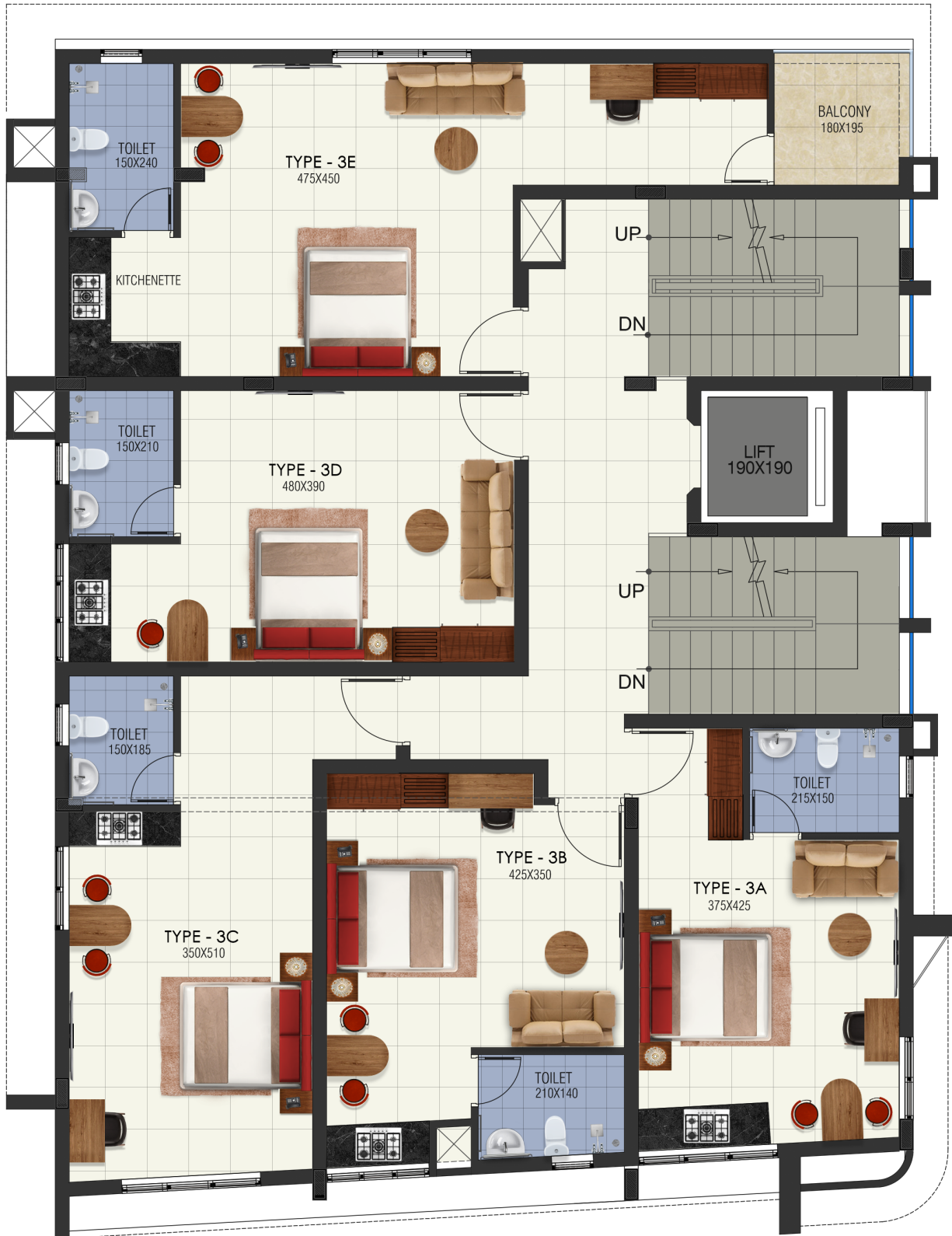
**TYPE - D**

**BUILTUP AREA**  
390 sq.ft

**TYPE - E**

**BUILTUP AREA**  
647 sq.ft

# Third Floor



**TYPE - A**

**BUILTUP AREA**  
363 sq.ft

**TYPE - B**

**BUILTUP AREA**  
357 sq.ft

**TYPE - C**

**BUILTUP AREA**  
423 sq.ft

**TYPE - D**

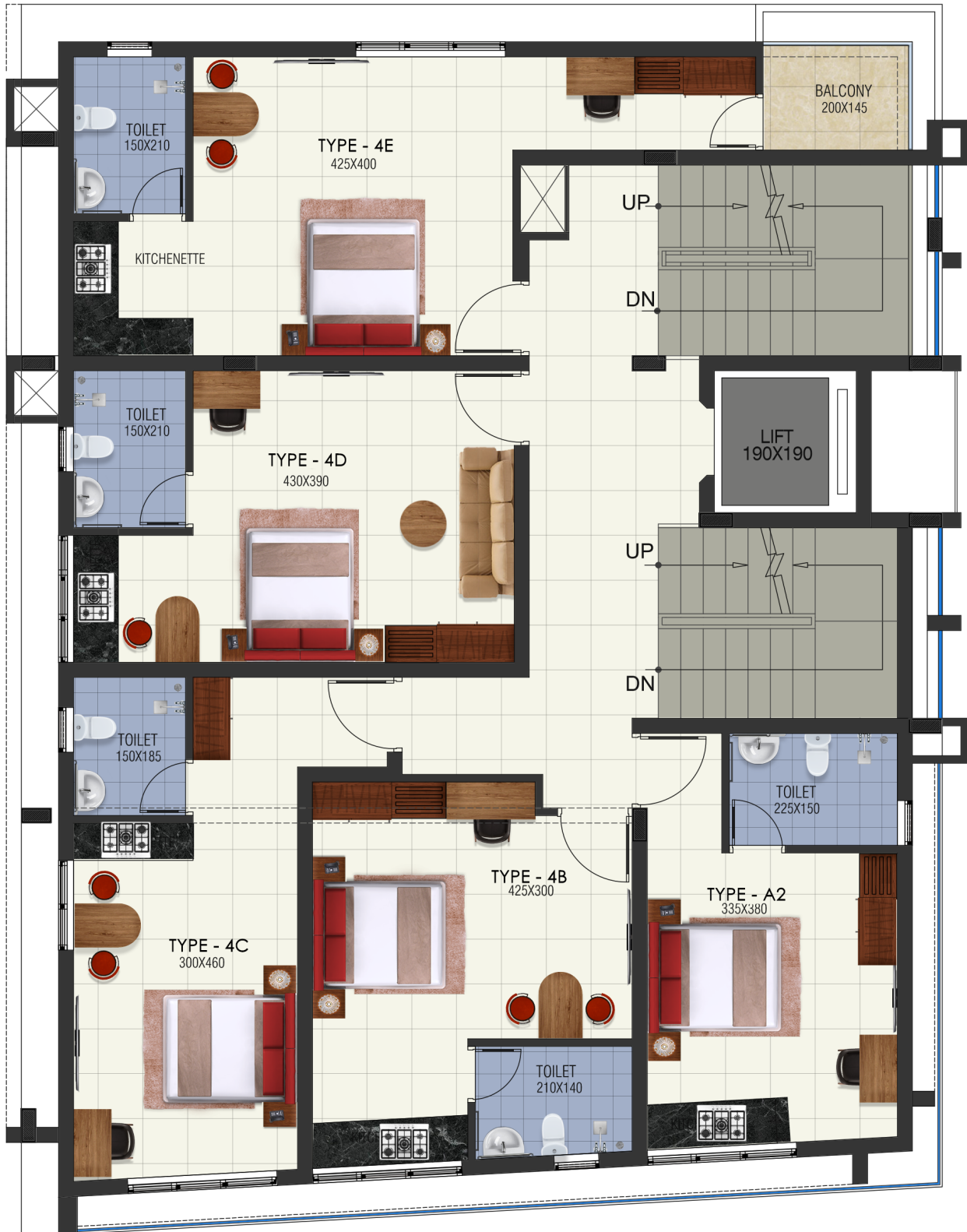
**BUILTUP AREA**  
390 sq.ft

**TYPE - E**

**BUILTUP AREA**  
621 sq.ft



# Fourth Floor



**TYPE - A**  
**BUILTUP AREA**  
 302 sq.ft

**TYPE - B**  
**BUILTUP AREA**  
 327 sq.ft

**TYPE - C**  
**BUILTUP AREA**  
 347 sq.ft

**TYPE - D**  
**BUILTUP AREA**  
 364 sq.ft

**TYPE - E**  
**BUILTUP AREA**  
 495 sq.ft

# Standard Specifications

**Structure:**

RCC framed structure. Foundations as per requirement. Walls with block masonry.

**Flooring:**

80" x 80" plain Ivory vitrified tiles for the entire apartment. Anti-skid tiles for lobby, common area and balconies.

**Painting:**

Polished mat finish entrance door. Putty and plastic emulsion finish for internal wall and ceiling. Enamel paint for wood works. Exterior emulsion for external wall.

**Electrical:**

Three phase power supply with concealed conduit wiring with copper conductor, adequate light and fan points controlled by ELCB and MCBs with independent energy meter. Elegant modular switches and quality electrical wires.

**Cable TV:**

Concealed cable TV point in living room and bed room.

**Toilets:**

Anti-skid ceramic tiles for floor, ceramic tiles on walls up to 7 ft. height. Concealed pipes and CP fittings. Hot and Cold mixer taps with overhead shower and piping for geyser in all toilets. Wash basin and EWC in toilets. Wash basin in dining space. Provision for exhaust fan in toilets. White sanitary ware.

**Joinery:**

Powder coated UPVC windows & Ventilations with MS grills and glazed shutters. Powder coated UPVC sliding door for French windows. Moulded HDF door with frame for all doors.

**Generator:**

For lifts, common area, water pumps etc.

**Fire-fighting:**

Fire-fighting arrangements as per kerala building rules and fire force requirements.

**Water supply:**

Water supply from KWA, Borewell / open well through sump and overhead tank.

**Air Conditioner:**

Provision for ACs in all rooms.

**Car parking:**

Covered car park on extra cost. Allotment on priority basis on booking.

**Facilities:**

All round compound wall with guard room for 24hrs security.

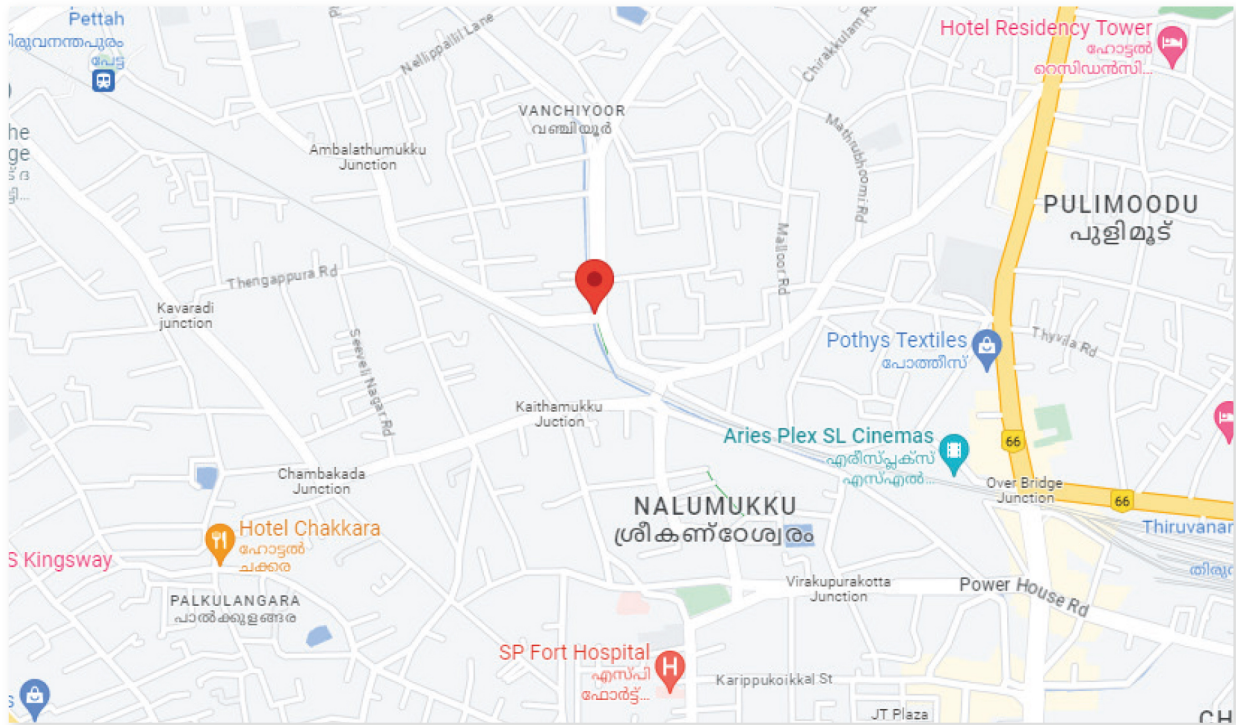
**Waste management:**

Bio-bin, Incinerator, STP.

Note: All measurements and specifications / brands given elsewhere in the brochure are subject to variations without specific or general notice. All such variation/ alterations shall be purely at the discretion of the builder. The information contained herein does not form part of the contract and is subject to change. Elevation given is an artistic impression only. This brochure does not constitute a legal offer. Terms & Conditions apply.



# Location Map



## Amenities



24 hrs Security



CCTV Surveillance for Common Area



WiFi Internet



The banker to every 

Project Approved

K-RERA/PRJ/TVM/048/2024  
RERA.KERALA.GOV.IN

---

**INDEL INFRA PVT.LTD.**  
TC 82/C-638, Opp. New Court Complex  
Vanchiyoor, Trivandrum-35, Kerala-India

**INDEL INFRA PVT.LTD.**  
XXV/2, Kerala State House Building, Changam Puzha Nagar  
South Kalamassery, Kochi, Ernakulam - 682036

Tel: 0471-2474869

| Mob: +91 7736800800

| Email: indelkariyath@gmail.com